

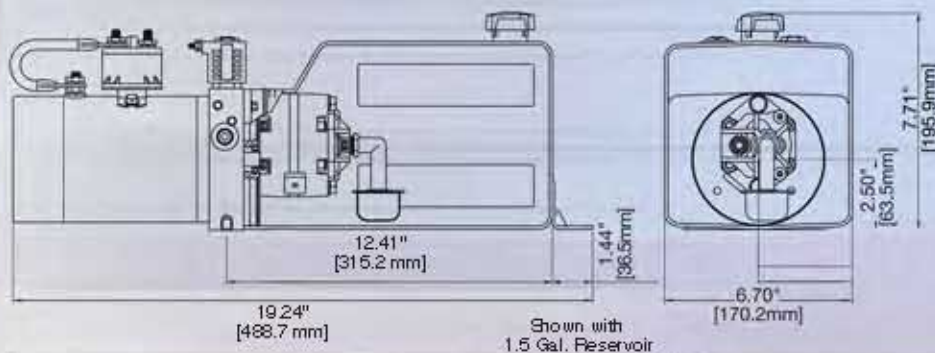
STONE[®]

FEATURES:

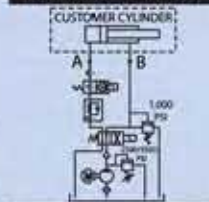
- Double Acting
- Hold In Off Position
- Easily Replaces Competitors Units
- Top Position Endhead Valving
- Manual Override Valve
- Solenoid Operated Cartridge Valves (easy field service)

Hydraulic Power Unit For Dump Trailers

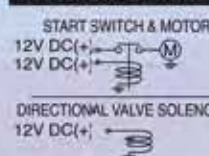
This unit is for power up-hold-power down applications. The controller (either customer-supplied or supplied with unit) will power the unit in both directions. The unit will hold load in the off position. Pressure compensated flow control allows smooth-running functions in both directions. Features include a fixed relief valve & cartridge valves for easy field service & interchangeability.



HYDRAULIC CIRCUIT



ELECTRICAL CIRCUIT



ORDERING GUIDE

DC-41DT	Pump	Reservoir	Fixed High Relief
C —	20 —	15P —	25
Blank No Controller	2.0 (3500 PSI Max)	15P 25P	25 = 2500 PSI (172 Bar)
C With Controller	3.1 (2500 PSI Max)	15S 25S	35 = 3500 PSI (240.9 Bar)
STANDARD FEATURES ON DC-41DT FAMILY: • 12V DC 1 Terminal Std Duty Motor • 12V DC Int Duty Start Solenoid • 10V DC 2P4W Direction Valving • 10V DC 2P2W Load Hold Valve • 2.5 GPM Flow Control • Horizontal Mount Plumbing • SAE Ports • Low RV@1,000 PSI	Example: 20 = 20 CC/Rev. (.122 Cu. In/Rev.)	Example: 15P = 1.5 Gal. Plastic 25S = 2.5 Gal. Steel	



1-866-729-4104
stonehydraulics.com

SPX

HYDRAULIC TECHNOLOGIES

STONE[®]

AC/DC Hydraulic Power Unit General Applications



Auto Hoist

Tire Changer

Dump Trailer

Tail Gate

Man Lift AC & DC

Scissor Lift

Dock Leveler

Snow Plow

Truck Mounted Crane

Dump Truck

Bale Spike

Recreational Vehicle

Material Handling

Auxiliary Power Unit

Filter Crusher/Compactor

Hose Crimper

